



BF Studios
graphic design

BF Studios

DESIGN PORTFOLIO

www.bfstudiosdesign.com

301-775-5280

bfrench@bfstudiosdesign.com

LOGO DESIGNS



SOCIAL MEDIA MARKETING

Let's help our moms
by renewing our focus on
MATERNAL HEALTH!

Read more in the **HHS ACTION PLAN**
and the **SURGEON GENERAL'S**
CALL TO ACTION to see how
you can help.



www.womenshealth.gov/maternalhealth



HEART DISEASE IN WOMEN

High blood pressure, or hypertension, is a top risk factor for cardiovascular disease.

HAVE YOU CHECKED YOUR BLOOD PRESSURE TODAY?



#NWBPAW
<https://www.womenshealth.gov/nwbpaw>



SCHEDULE
YOUR ROUTINE
SCREENING
TODAY!



#NWHW | #FindYourHealth | [Womenshealth.gov/nwhw](https://www.womenshealth.gov/nwhw)

Many people know about using aspirin during a heart attack, but...



Low dose aspirin can ALSO be used during pregnancy and/or after delivery to prevent or delay onset of preeclampsia (high blood pressure and other symptoms).

Ask your doctor for more information.

ALSO CHECK OUT:
<https://www.uspreventiveservicestaskforce.org/uspstf/document/RecommendationStatementFinal/low-dose-aspirin-use-for-the-prevention-of-morbidity-and-mortality-from-preeclampsia-preventive-medication>

#NWBPAW
<https://www.womenshealth.gov/nwbpaw>



Brought to you by HHS Office on Women's Health



hey MOMS

EXPECTING AND NEW

JOIN US AT THE M.O.M.S. TOUR
MORE THAN JUST A
BABY SHOWER

Saturday, September 30, 2023
11 AM - 2 PM CT

MLK Recreation Center
2901 Pennsylvania Avenue, Dallas, TX 75215

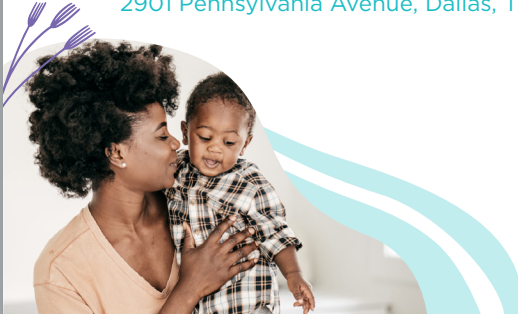
THE **m.o.m.s** TOUR
MATERNAL OUTCOMES MATTER SHOWER



Come Enjoy
FOOD, GAMES, DAD'S DEN,
ENTERTAINMENT, ESSENTIAL GIVEAWAYS

RESOURCES INCLUDE:

- Diapers
- Wipes
- Car Seats
- Strollers
- Carriers
- & more!



CELEBRATE & CONNECT

EXPECTING + NEW MOMS, DADS, BABIES, AND FAMILIES
TO INFORMATION & RESOURCES

WWW.THEMOMSTOUR.INFO



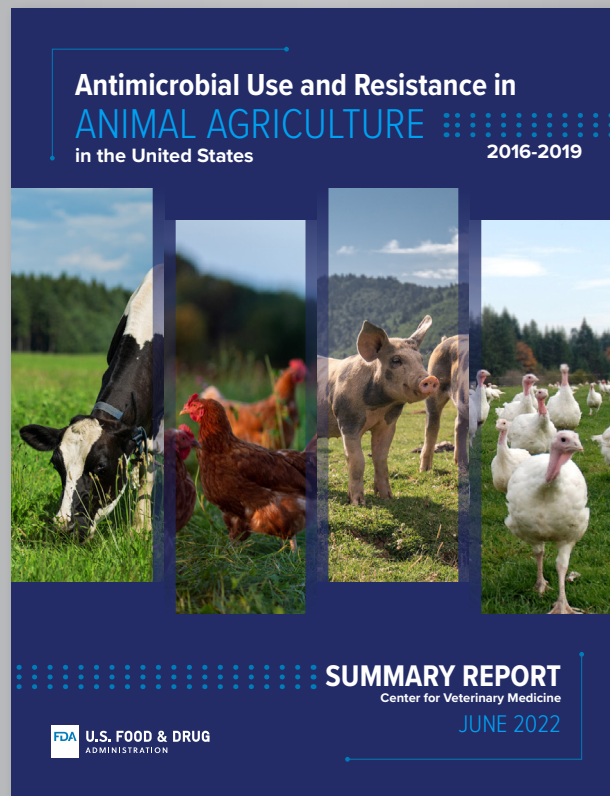
LARGE-SCALE REPORTS



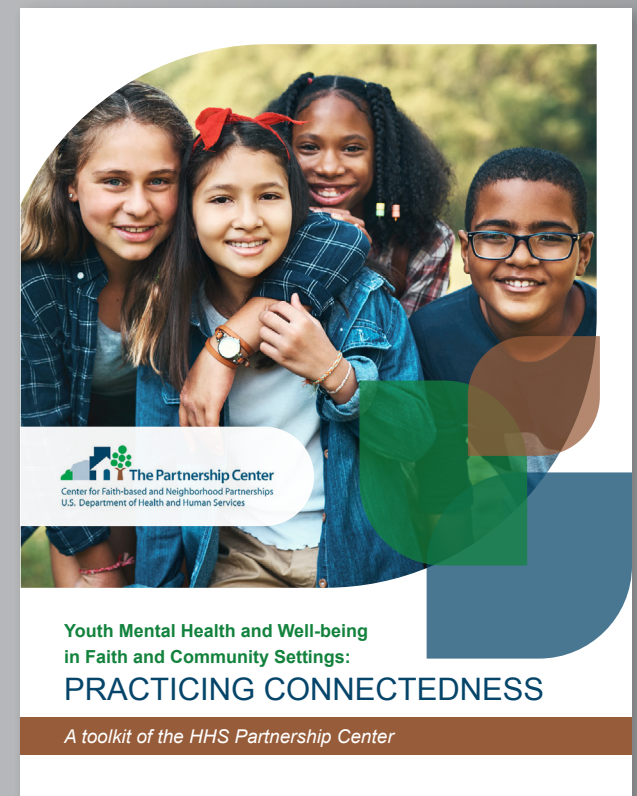
View the full report [HERE](#)



View the full report [HERE](#)



View the full report [HERE](#)



View the full report [HERE](#)



PROFESSIONAL RECRUITING



Employees are the single most important investment any business makes; after all, a company is only as good as its people. Recruiting great people requires hard work, responsiveness, perseverance, and dedication. Partnering with the right recruiting firm can make a world of difference to your organization.

We work directly with executives, managers and other decision makers and cater our service to every individual that we work with. The personalized service that you receive from Kamis ensures that we understand your needs, and enables us to find you the best candidates.

Each organization is unique, and our ability to understand, adapt and respond to our clients has been paramount to our success.

With more than 2,000 positions filled by our team throughout their respective careers, you can count on us to deliver the right resources for your organization.

OUR SERVICES

Direct Hire
With no upfront fees and a performance guarantee, we source, screen and recruit qualified candidates that you hire as an employee of your company. We will remain engaged with you throughout the entire process.

Contract
If you need a consultant for a specific project or a set timeframe that requires a particular expertise, we can draw upon our vast network to quickly find you the right candidate.

Outsourced Recruiting
We are able to service part or all of your recruiting activities, customized based on your current and future needs. We offer this on either a part-time or full-time basis, with no minimum duration for a fixed hourly rate.

Contract-to-Hire
Allows both the KamisPro consultant and the client a trial run before committing to permanent employment. Think of it as a hybrid of a direct hire and a contract.

AREAS OF SPECIALTY

Information Technology
Accounting/Finance

Administrative
Human Resources

C-level
Marketing

INDUSTRIES SERVED

Non-Profits/Associations
Government Contractors


Higher Education
Healthcare

Insurance
Technology



CONTACT US

PEARL CYMBARKOLE | Business Development
 Phone: (301) 357-0559 | Email: ryan@kamispro.com
 Website: kamispro.com

RATTLESNAKE FLAT WIND FARM

HOMEGROWN ENERGY IN ADAMS COUNTY

Rattlesnake Flat consists of 57 modern Siemens Gamesa wind turbines and is a natural progression for the highly productive agricultural powerhouse of Adams County. Through a partnership with Avista, harnessing the wind across Rattlesnake Flat will bolster the regional economy and strengthen the local electric grid, providing low-cost renewable energy to Avista and its ratepayers.

ABOUT RATTLESNAKE FLAT WIND

Rattlesnake Flat is a 160 MW wind farm in central Adams County. Located 12 miles southeast of Lind and 15 miles south of Riverview, the wind farm is situated atop a gentle plateau known as "Rattlesnake Flat," which is oriented perfectly into the southwest prevailing wind, allowing the project to maximize its energy production while minimizing impacts to ongoing agricultural activities. Rattlesnake Flat is Adams County's first wind project and delivers power to Avista's regional transmission grid, generating enough electricity to power nearly 38,000 homes each year.





Since 2006, E-PAGA's dedicated experts have served as trusted advisers to our clients, ensuring efficient and effective communications while delivering customized, cutting-edge solutions. Our dynamic professional team has provided top-tier service and exceptional results in fulfilling more than 80 federal contracts.

HCaTs CAPABILITIES STATEMENT

Instructional Design and Training Development

Our instructional systems design team collaboratively supports our clients to analyze, design, develop, implement, and evaluate the training program solutions that best serve the organization's needs.

Information Technology Solutions

Whether an organization needs new development, transition to a new technology stack, or the operations and maintenance of existing systems, our high-performing team will work with the client to ensure successful implementation of an innovative solution.

Human Capital Solutions

Our industrial-organizational psychologists, consultants, and executive coaches employ best practices and apply their expert knowledge to help our clients hire the right people, manage workforces effectively, and optimize productivity.

Project Management

Our PMP-certified project managers utilize multidisciplinary management approaches to help clients solve problems and create opportunities for innovation while keeping projects on schedule and within budget.

OUR CLIENTS

GSA Contract Holder

HCaTs
Human Capital & Training Solutions

E-PAGA has done an exceptional job of maintaining timeliness of completion given the huge number of milestones/deliverables in the scope of work and the number of subject matter experts who they must keep aligned with the schedule/milestones. Performance exceeded government requirements.

- FDA HCaTs CLIENT

U.S. Department of Homeland Security
PRIME CONTRACTS
Federal Emergency Management Agency
National Emergency Training Center
Emergency Management Institute
National Fire Academy
FEMA Coaches
SUBCONTRACTS
United States Coast Guard
CIS-P Response Boat-Medium
Federal Emergency Management Agency
FEMA Coaches

U.S. Department of Justice
SUBCONTRACTS
Office of Justice Programs

U.S. Department of Education
SUBCONTRACTS
Office of Safe and Drug-Free Schools

U.S. Department of Defense
PRIME CONTRACTS
US ARMY Headquarters, DCS, G-3/5/7
Command and Control Support Agency
Office of Chief Information Officer
SUBCONTRACTS
US ARMY RSO Missiles and Space
Counter-Rocket Artillery, Aviator (C-RAAM)
Command and Control Support Agency
Office of Chief Information Officer

U.S. Department of Health & Human Services
PRIME CONTRACTS
Food and Drug Administration
Office of Regulatory Affairs
Office of Training, Education and Research
Center for Drug Evaluation and Research
Office of Communications
SUBCONTRACTS
National Institutes of Health
Office of Research on Women's Health
Occupational Health Services
National Institute of Allergy and Infectious Diseases

EXCEL SERVICES CORPORATION



EXCEL has vast U.S. and international licensing experience working with regulatory bodies including the U.S. Nuclear Regulatory Commission, International Atomic Energy Agency, and Canadian Nuclear Safety Commission. EXCEL has worked with numerous nuclear plant designers and operators to develop and implement licensing and regulatory strategies for all phases of the nuclear plant life cycle, from design certification, initial licensing, license renewal, to decommissioning.

The following are just a few of EXCEL's capabilities and areas of support:

- A** Siting for Nuclear Power Plants
- B** Critical Infrastructure Protection including Physical and Cyber Security
- C** PWR Steam Generator Replacement
- D** PWR Plant Ageing Management
- E** PWR Long Term Operation (LTO)
- F** Radioactive Waste Management
- G** Decommissioning
- H** Plant Modifications
- I** Maintenance / In-Service Inspection (ISI)
- J** Scientific Codes
- K** Meteorology
- L** Oceanography and coastal engineering
- M** Human induced external events
- N** Source term analysis for nuclear material
- O** Scientific support on seismic analysis
- P** Environmental science
- Q** Ecology
- R** Accident Analyses
- S** Probabilistic Safety Assessments
- T** NORM related activities (Naturally Occurring Radioactive Material)

- U** Radon dose assessment
- V** Geology, Hydrology and Geochemistry
- W** Ground water modelling
- X** Public Radiation Protection Programs
- Y** Chemistry programs
- Z** Dosimetry programs and bioassay




1191 Rockville Pike, Suite 100 Rockville, MD 20852
Telephone: (301) 984-4400 Facsimile: (301) 984-7600
Email: information@excelnrc.com
www.excelnrc.com

BROCHURES

UNI AND THE USG

What Does UNI offer members as a result of the USG partnership that they cannot get anywhere else or on their own?
As a result.....

BECOME A UNI MEMBER

and realize the benefits of how you can be more competitive and successful in the U.S. and global business markets. Growing the Supply Chain globally means being able to:



Participate in projects globally to maximize U.S. opportunities.

Work with the U.S. Government (USG) to ensure that products and services can be appropriately exported to foreign nuclear projects.



FIND OUT HOW YOU CAN BENEFIT FROM A MEMBERSHIP WITH UNITED NUCLEAR INDUSTRY ALLIANCE

by attending our session on How UNI help you be more successful as a U.S. Supplier Business, Domestically and Internationally.

Wednesday, August 7 from 8:30-10:00 a.m. in the _____ room.



LET THE UNITED NUCLEAR INDUSTRY ALLIANCE (UNI, pronounced "U and I") take you to a higher level of conducting business in the nuclear industry.



If you are a **NUCLEAR SUPPLIER, CONTRACTOR, OR UTILITY,** you need to understand the **UNI DIFFERENCE.**

www.UNIalliance.org
11921 Rockville Pike
Suite 107
Rockville MD 20852
(240) 563-2223
Information@unialliance.org

WE ARE A Nuclear Supply Chain Business Alliance DEDICATED TO:



Creating Innovative Business Relationships Among Its' Members

Creating Innovative Business Relationships Between Its' Members And Utilities



Facilitating Effective Local, State, And Federal Government Support That Reenergizes The U.S. Supply Chain Community

Maximizing Our Members' Ability To Compete More Successfully In The Nuclear Industry, Domestically And Internationally



ACCOMPLISHMENTS

UNI sponsored a series of meetings with Puerto Rican delegates in late October 2018 to discuss the technological advances of Small Modular Reactors (SMRs), the benefits nuclear energy, and how SMRs can be the ideal energy producer for Puerto Rico.

As a result, we brought the interest of the PR delegates to officials of the U.S. government and the DOE is moving ahead on a feasibility study to evaluate the energy benefits, impacts, and economics of developing nuclear energy production in Puerto Rico.

WE INTERFACE DIRECTLY with key government agencies/officials to aggressively work as the Supply Chain's advocate with federal, state, and local governments.

UNI MEMBERSHIP INTEGRATES affiliates and client communities.

WE TAKE YOUR INPUT in defining the gaps in the industry/supply chain, and present "plans for success" to close those gaps.

WE FIND WAYS TO ENHANCE and improve Supply Chain relationships and infrastructure/activities between Utilities and Suppliers, to bring about better communication and collaboration.



ACCOMPLISHMENTS

REGISTRATION INFORMATION

- Please complete the registration form and make payment. Cash, Check, VISA, MasterCard and PayPal are accepted (\$25 return check fee). There are NO REFUNDS.
- Campers must be 3 years old by June 1 and toilet trained.
- Campers need a snack and drink. Full day campers should also bring a lunch.
- Campers should wear comfortable gym clothes.
- The Maryland Health Department requires a Health History Form on each child by the first day of camp.
- Campers are grouped by age and gymnastics experience. If you want your child grouped with a friend or sibling, let the office know by the first day of camp.
- Each camper receives one camp T-Shirt each summer.
- Hill's offers a multi-week discount. Students receive a 10% discount on additional weeks of camp if payment is received at least 7 days in advance (discount does not apply to the first week of camp or to individual days of camp).

PAYMENT RECORD FOR OFFICE USE ONLY

Total Amount Due _____	Payment/Date/Type _____
Add week _____	Add Week _____
Add week _____	Add Week _____
Add week _____	Add Week _____
Add week & payment info _____	

HILL'S OFFERS

- Gymnastics Instruction (All ages - All levels)
- Birthday Parties
- Field Trips
- Private Lessons
- Competitive Teams
- Open Gym
- Summer Camps
- Summer Classes
- Winter Break and Spring Break "Camp"
- Tumbling Classes



7557 Lindbergh Drive
Gaithersburg, MD 20879
Ph: 301.840.5900
Fax: 301.330.9040
www.hillsgymnastics.com

Hill's Gymnastics



CAMP 2017

WEEKLY SESSIONS
June 12 - August 25



HILL'S GYMNASTICS CAMP 2017

WEEKLY SESSIONS
JUNE 12 - AUGUST 25

HILL'S GYMNASTICS OFFERS

a fun-filled camp for children with or without gymnastics experience. Campers will be placed in groups by their age and gymnastics level. The skills and activities will be specifically planned for the children in the group.

THE CAMPER'S DAY

will include gymnastics, games and other activities. They will learn gymnastics skills on trampoline, vault bars, balance beam and floor (tumbling). Campers will gain confidence, coordination, balance, fitness and motor skills that are important in all sports.



JOIN THE FUN THIS SUMMER

HALF DAY CAMP

9:00 - 12:30
Ages 3 to 13
\$180 per week or
\$45 per day

FULL DAY CAMP

9:00 - 4:00
Ages 3 to 13
\$260 per week or
\$75 per day

EXTENDED DAY

Arrive as early as 7am
Pick Up by 6pm
Additional \$70 per week or
\$15 per day

CAMP SESSIONS

June 12 - 16
June 19 - 23
June 26 - 30
July 3 - 7
July 10 - 14
July 17 - 21
July 24 - 28
July 31 - August 4
August 7 - 11
August 14 - 18
August 21 - 25

2017 CAMP REGISTRATION FORM

Child's Name _____
Sex _____ Age _____ DOB _____
Parent's Name _____
Home Phone _____ Cell Phone _____
Address _____
City/Zip _____ Email _____
PROGRAM: _____ Half Day _____ Full Day _____ Extended Day _____
Group child with _____ (if desired)
List serious food allergies, physical limitations and emotional/social concerns our staff should know about _____

CHECK WEEKLY SESSIONS ATTENDING (if Daily, write days attending)

_____ June 12 - 16	_____ July 10 - 14	_____ August 7 - 11
_____ June 19 - 23	_____ July 17 - 21	_____ August 14 - 18
_____ June 26 - 30	_____ July 24 - 28	_____ August 21 - 25
_____ July 3 - 7	_____ July 31 - August 4	

PAYMENT POLICY: Payment is due with camp registration. Cash, Check, Visa, MasterCard, and Discover through the website accepted. Credit cards must be presented in person. There is a \$25 charge for returned checks. Register carefully. There are NO REFUNDS.
MULTIPLE WEEK DISCOUNT: A student's first week of camp is full price. For additional weeks (same student), pay once or more days in advance and receive a 10% discount (full weeks of camp only). Sign-ups received less than seven days in advance or for a different child are not eligible for any discount.

MEDICAL RELEASE AGREEMENT AND PARENTAL CONSENT

* I understand there are no refunds.
* Students are expected to carry their own accident/medical insurance. The above named student(s) has had a medical examination within the last twelve months and is capable of participating in the sport of gymnastics. I agree to complete a health history form.
* WARNING: by the very nature of the activity, gymnastics carries a risk of physical injury. Coaches and instructors of the Hill's Gymnastics Training Center are safety conscious and follow appropriate safety procedures. In the event of injury or illness, every effort will be made to contact the parents or guardian. If necessary I authorize Hill's Gymnastics to administer first aid and/or authorize medical treatment if this becomes necessary.

Parent or guardian signature _____
Date _____

Please Print Clearly. One Per Child.

LARGE
BANNERS



THE ARTHUR MOATS MADDEN CHALLENGE



THE TERRIBLE TAILGATE
Red Lot 5a | 1:30pm | 12/1/19



POWERED BY **MADDEN NFL 20**

TO ENTER ▶▶
SUBSCRIBE TO BOTH



PODCAST
THE ARTHUR MOATS
EXPERIENCE WITH DEKE



YOUTUBE
THE ARTHUR MOATS SHOW

THEN ▶▶

EMAIL ARTHUR
crossthemoats@gmail.com

& TELL HIM WHY YOU
DERIVE AN OPPORTUNITY TO

**TRY TO CROSS THE MOATS
IN A GAME OF MADDEN**



Original



Helen's Blend



Dry-Hopped



Peach



Pear

JACK'S PRESSED-ON-SITE HARD CIDER

A HARD CIDER
handcrafted
from the ground up.



Original



Helen's Blend



Dry-Hopped



Peach



Pear

Pressed-On-Site. Never From Concentrate

Gluten free 🍏 No added sugar 🍏 Local Pennsylvania Apples

www.JACKSHARDCIDER.com

INVITATIONS

